

Models : **WB-VL-65 DSP Premium LX**
WB-VL-65 DSP LX



>> Videographic display <<

- Suitable for Car and LCV wheels
- *Wheel seating cones for LCV are supplied as Optional*
- Two modes of measurement - Normal & Fine
- Seven modes of Alloy wheel functions
- Graphical user interface for live balancing
- Unit conversion in "grams" / "ounces"
- Rim parameter entry through wheel rotation
- Over voltage & over load protection circuit
- Universal AC input socket
- Self calibration
- Automatic distance input
- Self checking on-line error display
- Adjustable unbalance threshold (weight cut off)
- Mid-centering device with Quick change lock nut to ensure fast mounting & removal of wheels
- Mechanical brake for weight addition and wheel mounting
- Automatic start with wheel guard closure
- High resolution (DVI input) & LED Monitor / LED digital display

Additional features for Premium models

- Split weight mode (spokes program)
- Optimization program
- Automatic Rim diameter and Rim width input

Models : **WB-DL-65 DSP Premium**
WB-DL-65 DSP



>> Elegant monitor type Digital display <<

Models : **WB-DL-65 DSP E**



All features are same as WB-DL-65 DSP except Mechanical brake & Automatic distance input

Automatic distance & diameter measurement



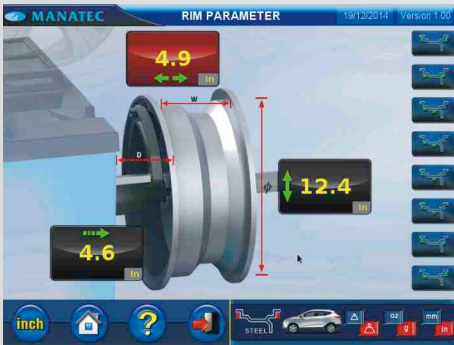
Automatic distance & rim diameter input through distance measuring rod.

Automatic width measurement



Automatic rim width measurement.

Alloy Wheel Functions



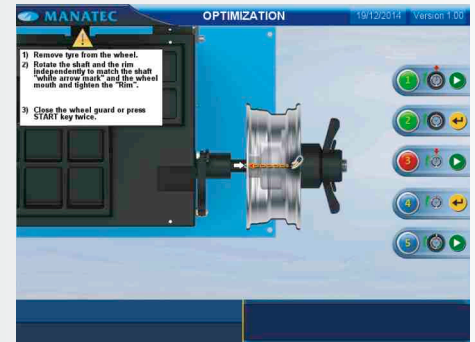
7 Alloy wheel (ALU) functions.

Auto Start



Automatic start with closing of wheel guard, helps in quick balancing process.

Optimization Program

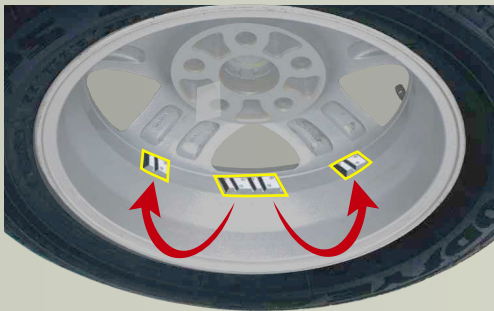


Optimisation program helps in reduced wheel weights consumption.

Split Weight Program



Split weight program (spokes program) helps to split the weight to be hidden behind the spokes of the alloy wheels.



Technical Specifications

Maximum wheel weight	65 kg	
Maximum wheel diameter	39" (990 mm)	
Maximum wheel width	21" (533 mm)	
Rim diameter	10" to 24" (254 mm to 610 mm)	
Rim width	1.5" to 20" (38 mm to 508 mm)	
Rim distance		
By distance measuring rod	4 mm to 178 mm	
By keypad entry	4 mm to 550 mm	
Resolution		
Fine mode	1 gm	
Normal mode	5 gm	
Minimum unbalance detection	<i>Fine</i>	<i>Normal</i>
Rim diameter upto 16.3"	4 gm	10 gm
Rim diameter above 16.3" upto 24"	9 gm	20 gm
Maximum unbalance measurement	300 gm	
Accuracy	1 gm	
Position accuracy	± 1°	
Balancing speed	200 RPM	
Spin time	Min. 9 sec.	
Power supply	230V ±10% AC, Single Phase, 50Hz	
Power	0.35 HP	

Standard Accessories

	Wheel Guard
	Width Caliper range 3" - 20"
	Weight Plier
	Mid centering device kit with QCLN assembly, Hub, Hub cover & pressure ring
	Wheel seating cone for wheel bore <ul style="list-style-type: none"> ■ Dia 48 to 77 mm ■ Dia 77 to 105 mm ■ Dia 110 to 120 mm

Mid Centering Device



Mid centering device for positioning of wheels accurately at center of the rotor assembly. Quick Change Lock Nut (QCLN) to ensure fast mounting and removal of wheel.